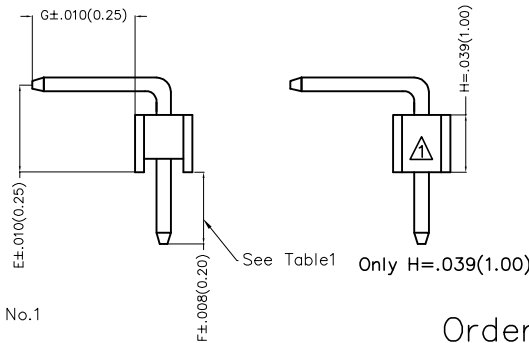
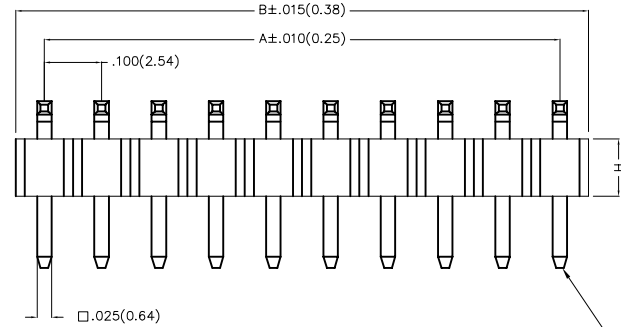
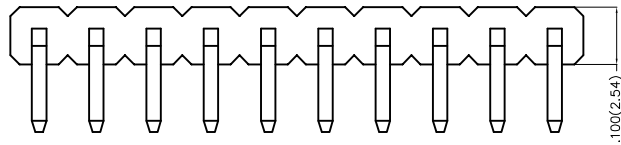


Dimensions(in/mm)	
H	E
.039(1.00)	.059(1.50)~.069(1.75)
.059(1.50)	.079(2.00)~.089(2.25)
.079(2.00)	.098(2.50)~.108(2.75)
.098(2.50)	≥.118(3.00)

REV	LOCATIONS	DESCRIPTION	DATE	REVISER	APPD
1	△	Structure of Housing change	08/MAR/23	MATT	KATE
2	△	Add G size serial number	10/APR/23	YYQ	LEO



Electrical

Current Rating: 3.0A AC(rms)/DC
Voltage Rating: 250V AC(rms)/DC
Contact Resistance: 20 mΩ Max
Insulation Resistance: 1000 MΩ Min
Withstanding Voltage: 600V AC r.m.s
Temperature Range—Operating: -40°C~+105°C

Material

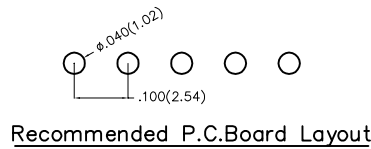
Housing: Glass Filled Polyester (UL 94V-0), Color: Black
Pin: Brass
Pin Plating: Gold plated/ Selective gold plated on contact area and 120μ" Min. matte tin plated on tails area

Ordering Information

FPH 254 65 — S XX B X XX X XX XX XX B
1 2 3 4 5 6 7 8 9 10 11 12 13

1 Category FPH—Pin Header	2 Series Number 254—Pitch 2.54mm	3 Distinction No. 65	4 Row Option S—Single Row	5 Circuits XX	6 Entry Angle B—90° Angle	7 Plating 1—Gold plated 7—Selective gold plated on contact area and matte tin plated on tails area
------------------------------	-------------------------------------	-------------------------	------------------------------	------------------	------------------------------	--

8 Thickness of Plating 01—1μ" 15—15μ" Custom plate available	9 Material—Resin 1—PBT 4—PA6T	10 E Size 01,02...—Serial number (See Table1)	11 F Size 01,02...—Serial number (See Table1)	12 G Size 01,02...—Serial number (See Table1)	13 Packaging B—PE Bag
---	-------------------------------------	---	---	---	--------------------------




THIRD ANGLE PROJECTION	GENERAL TOLERANCES (UNLESS SPECIFIED)		APPROVE BY LEO	DATE 10/APR/23	PART NO. FPH25465—SXXBXXXXXXXXXXB	ITEM NO. FPH25465	 Building Technology Cornerstone	
	DESIGN UNITS METRIC	X. ±0.30	X.* ±5°	CHECKED BY GISELLE	DATE 10/APR/23	TITLE Board to Board(Pin Header) Pitch 2.54mm 90° Angle(DIP)		REV 2
SCALE 5:1	SIZE A4	X.XX ±0.15	X.XX' ±1°	DRAWN BY YYQ	DATE 10/APR/23	THIS DRAWING CONTAINS INFORMATION THAT IS PROPRIETARY TO TXGA INDUSTRIAL ELECTRONICS(S.Z)CO.,LTD AND SHOULD NOT BE USED WITHOUT WRITTEN PERMISSION		

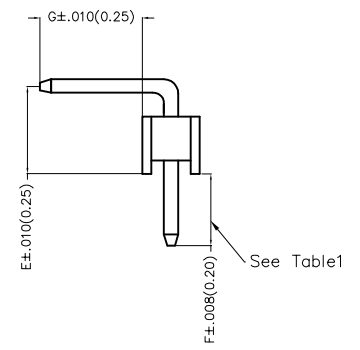
REV	LOCATIONS	DESCRIPTION	DATE	REVISER	APPD

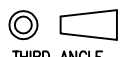

Table1

Serial number	Dimensions (in/mm) E	Serial number	Dimensions (in/mm) E
01	.059(1.50)	19	.236(6.00)
02	.069(1.75)	20	.246(6.25)
03	.079(2.00)	21	.256(6.50)
04	.089(2.25)	22	.266(6.75)
05	.098(2.50)	23	.276(7.00)
06	.108(2.75)	24	.285(7.25)
07	.118(3.00)	25	.295(7.50)
08	.128(3.25)	26	.305(7.75)
09	.138(3.50)	27	.315(8.00)
10	.148(3.75)	28	.325(8.25)
11	.157(4.00)	29	.335(8.50)
12	.167(4.25)	30	.344(8.75)
13	.177(4.50)	31	.354(9.00)
14	.187(4.75)	32	.364(9.25)
15	.197(5.00)	33	.374(9.50)
16	.207(5.25)	34	.384(9.75)
17	.217(5.50)	35	.394(10.00)
18	.226(5.75)		

Serial number	Dimensions (in/mm) F	Serial number	Dimensions (in/mm) F
01	.059(1.50)	19	.236(6.00)
02	.069(1.75)	20	.246(6.25)
03	.079(2.00)	21	.256(6.50)
04	.089(2.25)	22	.266(6.75)
05	.098(2.50)	23	.276(7.00)
06	.108(2.75)	24	.285(7.25)
07	.118(3.00)	25	.295(7.50)
08	.128(3.25)	26	.305(7.75)
09	.138(3.50)	27	.315(8.00)
10	.148(3.75)	28	.325(8.25)
11	.157(4.00)	29	.335(8.50)
12	.167(4.25)	30	.344(8.75)
13	.177(4.50)	31	.354(9.00)
14	.187(4.75)	32	.364(9.25)
15	.197(5.00)	33	.374(9.50)
16	.207(5.25)	34	.384(9.75)
17	.217(5.50)	35	.394(10.00)
18	.226(5.75)		



Serial number	Dimensions (in/mm) G	Serial number	Dimensions (in/mm) G
01	.059(1.50)	19	.236(6.00)
02	.069(1.75)	20	.246(6.25)
03	.079(2.00)	21	.256(6.50)
04	.089(2.25)	22	.266(6.75)
05	.098(2.50)	23	.276(7.00)
06	.108(2.75)	24	.285(7.25)
07	.118(3.00)	25	.295(7.50)
08	.128(3.25)	26	.305(7.75)
09	.138(3.50)	27	.315(8.00)
10	.148(3.75)	28	.325(8.25)
11	.157(4.00)	29	.335(8.50)
12	.167(4.25)	30	.344(8.75)
13	.177(4.50)	31	.354(9.00)
14	.187(4.75)	32	.364(9.25)
15	.197(5.00)	33	.374(9.50)
16	.207(5.25)	34	.384(9.75)
17	.217(5.50)	35	.394(10.00)
18	.226(5.75)	36 	.407(10.35)



 THIRD ANGLE PROJECTION DESIGN UNITS METRIC SCALE 5:1 SIZE A4	GENERAL TOLERANCES (UNLESS SPECIFIED)		APPROVE BY LEO	DATE 10/APR/23	PART NO. FPH25465-SXXBXXXXXXXXXXB	ITEM NO. FPH25465	 Building Technology Cornerstone
	X. ±0.30	X.° ±5°	CHECKED BY GISELLE	DATE 10/APR/23	TITLE Board to Board(Pin Header) Pitch 2.54mm 90° Angle(DIP)		
	X.X ±0.20	X.X° ±2°	DRAWN BY YYQ	DATE 10/APR/23	THIS DRAWING CONTAINS INFORMATION THAT IS PROPRIETARY TO TXGA INDUSTRIAL ELECTRONICS(S.Z)CO.,LTD AND SHOULD NOT BE USED WITHOUT WRITTEN PERMISSION		
	X.XX ±0.15	X.XX° ±1°					
X.XXX ±0.10	X.XXX° ±0.5°						

REV	LOCATIONS	DESCRIPTION	DATE	REVISER	APPD

Circuits (n)	Part No.	Dimensions(in/mm)		Circuits (n)	Part No.	Dimensions(in/mm)	
		A	B			A	B
1	FPH25465-S01BXXXXXXXXXXB	—	.100(2.54)	21	FPH25465-S21BXXXXXXXXXXB	2.000(50.80)	2.100(53.34)
2	FPH25465-S02BXXXXXXXXXXB	.100(2.54)	.200(5.08)	22	FPH25465-S22BXXXXXXXXXXB	2.100(53.34)	2.200(55.88)
3	FPH25465-S03BXXXXXXXXXXB	.200(5.08)	.300(7.62)	23	FPH25465-S23BXXXXXXXXXXB	2.200(55.88)	2.300(58.42)
4	FPH25465-S04BXXXXXXXXXXB	.300(7.62)	.400(10.16)	24	FPH25465-S24BXXXXXXXXXXB	2.300(58.42)	2.400(60.96)
5	FPH25465-S05BXXXXXXXXXXB	.400(10.16)	.500(12.70)	25	FPH25465-S25BXXXXXXXXXXB	2.400(60.96)	2.500(63.50)
6	FPH25465-S06BXXXXXXXXXXB	.500(12.70)	.600(15.24)	26	FPH25465-S26BXXXXXXXXXXB	2.500(63.50)	2.600(66.04)
7	FPH25465-S07BXXXXXXXXXXB	.600(15.24)	.700(17.78)	27	FPH25465-S27BXXXXXXXXXXB	2.600(66.04)	2.700(68.58)
8	FPH25465-S08BXXXXXXXXXXB	.700(17.78)	.800(20.32)	28	FPH25465-S28BXXXXXXXXXXB	2.700(68.58)	2.800(71.12)
9	FPH25465-S09BXXXXXXXXXXB	.800(20.32)	.900(22.86)	29	FPH25465-S29BXXXXXXXXXXB	2.800(71.12)	2.900(73.66)
10	FPH25465-S10BXXXXXXXXXXB	.900(22.86)	1.000(25.40)	30	FPH25465-S30BXXXXXXXXXXB	2.900(73.66)	3.000(76.20)
11	FPH25465-S11BXXXXXXXXXXB	1.000(25.40)	1.100(27.94)	31	FPH25465-S31BXXXXXXXXXXB	3.000(76.20)	3.100(78.74)
12	FPH25465-S12BXXXXXXXXXXB	1.100(27.94)	1.200(30.48)	32	FPH25465-S32BXXXXXXXXXXB	3.100(78.74)	3.200(81.28)
13	FPH25465-S13BXXXXXXXXXXB	1.200(30.48)	1.300(33.02)	33	FPH25465-S33BXXXXXXXXXXB	3.200(81.28)	3.300(83.82)
14	FPH25465-S14BXXXXXXXXXXB	1.300(33.02)	1.400(35.56)	34	FPH25465-S34BXXXXXXXXXXB	3.300(83.82)	3.400(86.36)
15	FPH25465-S15BXXXXXXXXXXB	1.400(35.56)	1.500(38.10)	35	FPH25465-S35BXXXXXXXXXXB	3.400(86.36)	3.500(88.90)
16	FPH25465-S16BXXXXXXXXXXB	1.500(38.10)	1.600(40.64)	36	FPH25465-S36BXXXXXXXXXXB	3.500(88.90)	3.600(91.44)
17	FPH25465-S17BXXXXXXXXXXB	1.600(40.64)	1.700(43.18)	37	FPH25465-S37BXXXXXXXXXXB	3.600(91.44)	3.700(93.98)
18	FPH25465-S18BXXXXXXXXXXB	1.700(43.18)	1.800(45.72)	38	FPH25465-S38BXXXXXXXXXXB	3.700(93.98)	3.800(96.52)
19	FPH25465-S19BXXXXXXXXXXB	1.800(45.72)	1.900(48.26)	39	FPH25465-S39BXXXXXXXXXXB	3.800(96.52)	3.900(99.06)
20	FPH25465-S20BXXXXXXXXXXB	1.900(48.26)	2.000(50.80)	40	FPH25465-S40BXXXXXXXXXXB	3.900(99.06)	4.000(101.60)

 THIRD ANGLE PROJECTION	GENERAL TOLERANCES (UNLESS SPECIFIED)		APPROVE BY LEO	DATE 10/APR/23	PART NO. FPH25465-SXXBXXXXXXXXXXB	ITEM NO. FPH25465	 Building Technology Cornerstone
	DESIGN UNITS METRIC	X. ±0.30	X.* ±5°	CHECKED BY GISELLE	DATE 10/APR/23	TITLE Board to Board(Pin Header) Pitch 2.54mm 90° Angle(DIP)	
SCALE 5:1	SIZE A4	X.XX ±0.15	X.XX' ±1°	DRAWN BY YYQ	DATE 10/APR/23	THIS DRAWING CONTAINS INFORMATION THAT IS PROPRIETARY TO TXGA INDUSTRIAL ELECTRONICS(S.Z)CO.,LTD AND SHOULD NOT BE USED WITHOUT WRITTEN PERMISSION	
		X.XXX ±0.10	X.XXX' ±0.5°			REV 2	SHEET NO. 3/3